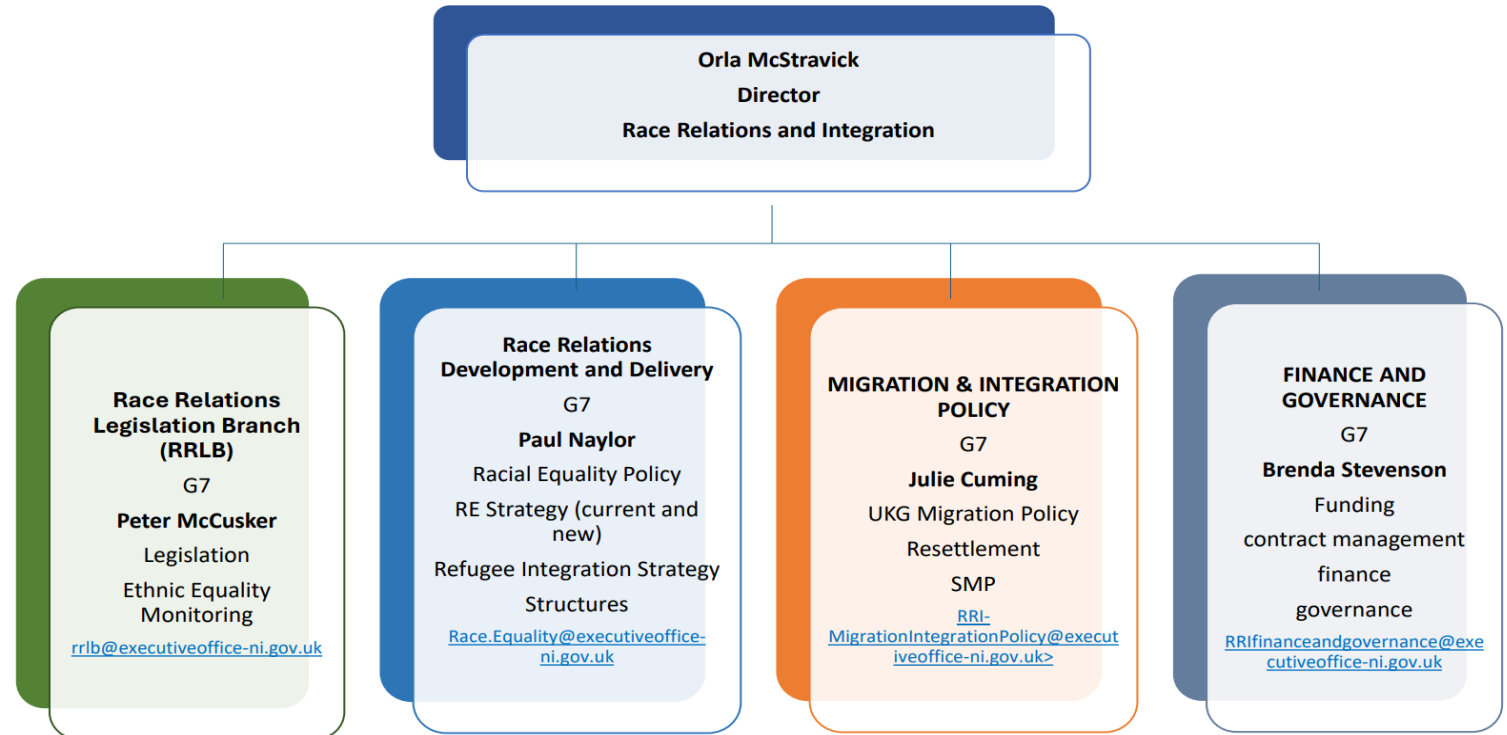




# RACE RELATIONS AND INTEGRATION

---

# Race Relations and Integration Division



# Refugee Integration Strategy

Work will be ongoing on a wide range of actions, including those that will take longer to deliver

## Key focus on:

- the development of resource hubs across council areas to provide support, advice and signposting for refugees and asylum seekers;
- Taking forward a skills and employment survey which seeks to know more about the skills, qualifications and employment experience of refugees and asylum seekers, including any barriers to employment;
- Ensuring regional immigration advice and information for asylum seekers and refugees; and
- Developing and enhancing communications.

# Full Dispersal Funding

The estimated budget for 2025-26 is **£3,656,250** and it is expected that TEO will receive **£1.2million** (subject to SPG agreement)

£1m for local councils

£200k for regional immigration advice

TEO will be speaking with Councils imminently regarding funding allocations and proposals.

# MEDF

Funding for 31 organisations (1.098m p.a) extended into 25/26 to align with work to develop a new strategic approach to racial equality.

Work ongoing to look at beyond March 25

Funding for the Crisis Fund 22-25 (182k p.a) has also been committed for 25/26 and is delivered through our Partnership with British Red Cross.

# Key work areas on race relations

Multi Agency Recovery Co-ordination Group

Development of New Strategic Approach to Racial Equality

Widened remit of the Strategic Planning Group and Tactical Delivery Group

# Asylum Trends

- As per published Home Office statistics, at the end of June 2025, there were 2,535 supported asylum seekers here, of which:
  - 69% were based in Belfast;
  - 246 were accommodated in contingency hotels, across 4 Council areas (outside of Belfast);
  - 2,273 were living in initial or dispersal accommodation, across 7 Council areas (including Belfast); and
  - a further 16 were in receipt of subsistence support only.
- The total number at the end of June 2025 was similar to the number reported for the same point a year earlier however a 24% decrease from the peak at the end of June 2023 (3,348).
- 81% decrease in the total number of asylum seekers accommodated in contingency accommodation from the peak at the end of June 2023
- The most common nationalities among our supported asylum seeker population are Somalia (27%), followed by Syria (10%) and Eritrea (9%).